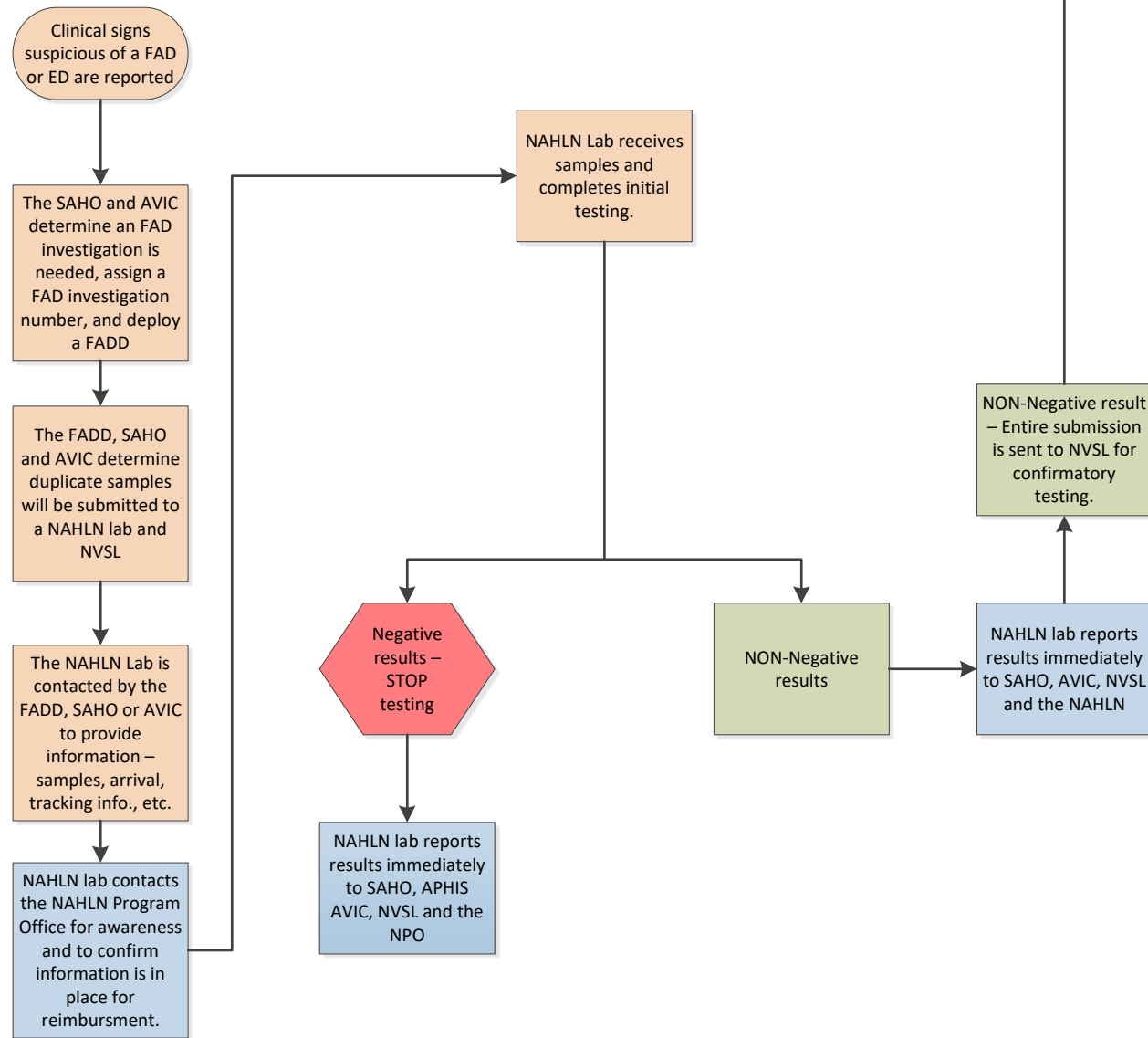


## FAD Communication Path



**NAHLN Program Office (NPO)**  
NAHLN@usda.gov

**NAHLN Coordinators E-mail**  
(Christina Loiacono + Beth Harris + Kelli Almes + Stephen Cassle)  
NAHLN.Coordinators@usda.gov

**Individual Emails:**  
**NAHLN Coordinator**  
Christina Loiacono DVM, PhD, DACVP  
515-337-7911 phone  
515-231-2515 cell  
Christina.M.Loiacono@usda.gov

**NAHLN Associate Coordinator**  
Beth Harris MS, PhD  
515-337-7362 phone  
515-708-0059 cell  
Beth.N.Harris@usda.gov

**NVSL Ames---Main Line**  
(515) 337---7266 (answered 24/7)

**NVSL Ames**  
NVSL.DVL.TeamLeads@usda.gov  
NVSL.AI.ND@usda.gov (poultry only)

**NAHLN Associate Coordinator**  
Kelli Almes, DVM, DACVP  
785-410-7656 phone/cell  
Kelli.Almes@usda.gov

**NAHLN Associate Coordinator**  
Stephen Cassle, DVM, MPH, DACVPM  
787-667-0912 phone/cell  
stephen.cassle@usda.gov

**NVSL FADDL---Main Line**  
(631) 323---3256  
**FADDL After Hours Emergency Contacts**  
(631) 375---5314 or (631) 332---6814  
**NVSL FADDL**  
FAD.Submissions@usda.gov

## NAHLN Laboratory Activation Path

