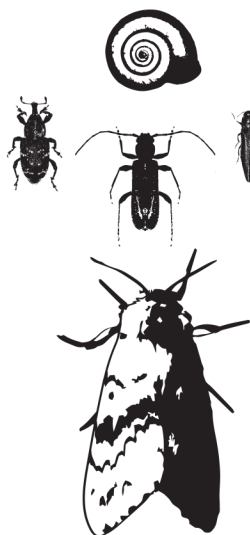
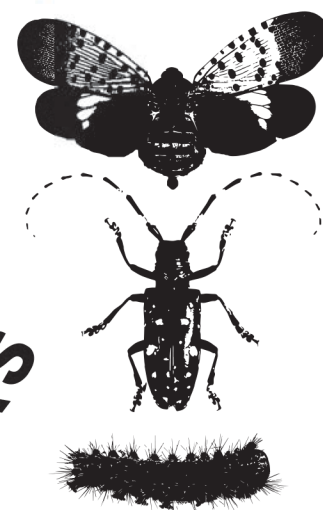


# NOTICE AND REPORT

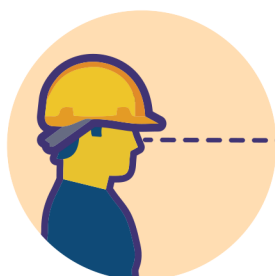
ACTUAL SIZES OF  
EXAMPLE PESTS



ACTUAL SIZES OF  
EXAMPLE PESTS



## HARMFUL HITCHHIKERS



SEE SOMETHING  
OUT OF THE ORDINARY



LIVING OR  
DEAD PESTS



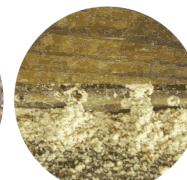
EGGS OR  
EGG MASSES



INSECT HOLES



INSECT GALLERIES



OTHER INSECT  
DAMAGE



TAKE A PICTURE



COLLECT A SAMPLE



REPORT WHAT YOU FOUND

SCAN TO  
REPORT



[ask.usda.gov](http://ask.usda.gov) [help.cbp.gov](http://help.cbp.gov)

Harmful pests can be transported on and in pallets, crates, and other packaging. These pests sometimes escape into our neighborhoods and forests, where they can cause millions of dollars in damages.

You can protect our neighborhoods, economy, and natural resources from these invaders by looking for signs of pests in your workplace and reporting anything unusual that you might find.



USDA and CBP are an equal opportunity provider, employer, and lender.